



Environmental Indicators for On-Site Wastewater in the Inland Bays and Little Assawoman Watersheds

Presented by:



Dave Schepens
Environmental Program Manager
Ground Water Discharges Section
Division of Water Resources

Overview

- Existing Indicator
- Proposed Regulations Opens Door for New Indicators
- Community Systems vs. Individual Systems
- Needs
- Desired Attributes
- Comments



Existing Indicator

➤ Septic Tank Conversions

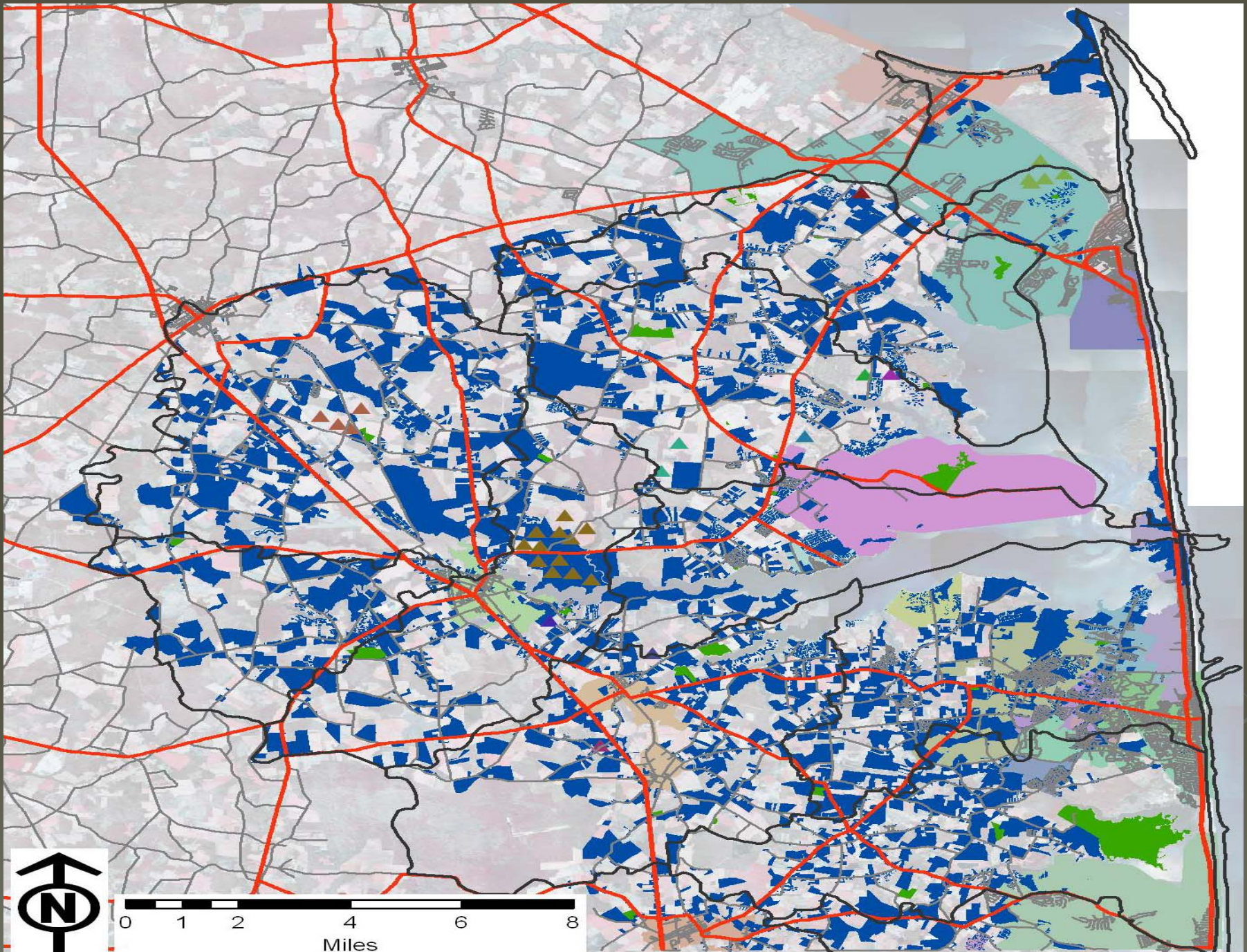
- Number of septic systems placed on central sewer systems
 - Useful, Relevant and Defensible
 - Useful – Yes
 - Relevant - Yes
 - Defensible – Yes

Proposed Regulation Requirements

- Inspection and Pump Out Program Established
 - Inspection and pump out once every three (3) years
- Proposed Indicator
 - Number of pumpouts annually
 - Count of N and P per lb not reaching the bays
 - Useful – Yes
 - Relevant – yes
 - Defensible - yes

Proposed Regulation Requirements (cont.)

- Number of malfunctioning systems (surfacing, cesspool and seepage pits)
 - Malfunctioning systems add more nutrients to the bays in particular systems without primary treatment such as cesspools and systems without soil treatment such seepage pits, direct discharges to the ditches and surfacing systems.
 - Average N from septic tank effluent from a septic tank is 50 mg/l
 - Useful – Yes
 - Relevant – yes
 - Defensible – yes



Proposed Regulation Requirements (cont.)

- As proposed all on-site systems will have Performance Standards
 - PSN 1 for systems equal to or greater than 20,000 gpd – 5 mgl
 - Community systems
 - PSN 2 for system larger than 2,500 gpd and less than 20,000 gallons per day – 10 mgl
 - PSN 3 for systems less 2,500 gpd – 20 mgl

Community/Cluster Systems vs. Individual Systems

➤ Possible indicators

- Number of new developments using community systems vs. individual systems
 - Useful – Yes
 - Relevant – yes
 - Defensible – yes
- Number of existing systems brought up to Performance Standards
 - Useful – Yes
 - Relevant – yes
 - Defensible – yes

Needs Prior to Implementation of Proposed Indicators / Performance Measures

- PCS adopted
 - Implementation
 - May take several years for baseline inspections to be completed
- Database designed
 - Currently being worked on
 - June 30th database should be up and running

Desired Attributes

➤ Pumpouts

- Monitoring and assessment
- Regulatory enforcement
- Communication

➤ Inspections

- Monitoring and assessment
- Setting priorities
- Regulatory enforcement
- Communication

Desired Attributes (cont.)

- Community Systems vs. Individual Systems
 - Monitoring and assessment
 - Regulatory enforcement
 - Communication
- Existing systems brought up to performance standards
 - Monitoring and assessment
 - Setting priorities
 - Regulatory enforcement
 - Communication

Questions / Comments

